



Activity ID	Activity Name	Orig. Dur.	Early Start	Early Finish	Total Float	October							November							December							January							February							March							April						
						29	06	13	20	27	03	10	17	24	01	08	15	22	29	05	12	19	26	02	09	16	23	02	09	16	23	30	06																					
DDA-1500	Fire Services Design for Sludge Thickening Building (STB)	320	08-Jul-22A	23-Jan-25	76	[Gantt bar: 08-Jul-22A to 23-Jan-25]																																																
DDA-1150	Building Services for STCDS - Prepare (60), Sub. & Review (45), Comment & Resub (14) & Approval (7)	126	24-Oct-22A	29-Dec-24	447	[Gantt bar: 24-Oct-22A to 29-Dec-24]																																																
<b>Package 7 - CLP Substation and HV Switchgear House</b>																																																						
DDA-490	UPS System for CLP Sub & HV Switchgear House - Prepare (102), Sub. & Review (45), Comment & Resub (14) & Approval (7)	168	03-Jun-21A	17-Dec-24	-281	[Gantt bar: 03-Jun-21A to 17-Dec-24]																																																
<b>Package 9 - Inlet Work (W)</b>																																																						
DDA-1210	Building Services for Inlet Work - Prepare (28), Sub. & Review (28), Comment & Resub (14) & Approval (7)	76	30-Mar-22A	16-Nov-24	34	[Gantt bar: 30-Mar-22A to 16-Nov-24]																																																
<b>Package 10 - Primary Sedimentation Tank (PST)</b>																																																						
DDA-1250	Electrical & Control for PST - Prepare (28), Sub. & Review (28), Comment & Resub (14) & Approval (7)	48	31-Aug-21A	22-Nov-24	-325	[Gantt bar: 31-Aug-21A to 22-Nov-24]																																																
DDA-1260	Building Services for PST - Prepare (28), Sub. & Review (28), Comment & Resub (14) & Approval (7)	90	01-Oct-21A	22-Nov-24	-325	[Gantt bar: 01-Oct-21A to 22-Nov-24]																																																
<b>Package 11 - Control and Instrumentation System</b>																																																						
DDA-490	Power Quality & Energy Management System (PCEMS) - Prep(28), Sub.&Review(28), Comment&Resub(14)& Approval(7)	130	02-Oct-21A	30-Jan-25	-151	[Gantt bar: 02-Oct-21A to 30-Jan-25]																																																
DDA-490	Supervisory Control & Data Acquisition (SCADA) System - Prep(28), Sub.&Review(28), Comment&Resub(14)& Approval(7)	238	24-Apr-23A	31-Mar-25	-151	[Gantt bar: 24-Apr-23A to 31-Mar-25]																																																
DDA-1270	Gas Detection System - Prep(28), Sub.&Review(28), Comment&Resub(14)& Approval(7)	91	06-May-23A	31-Mar-25	-151	[Gantt bar: 06-May-23A to 31-Mar-25]																																																
DDA-460	Computerized Maintenance Management System (CMMS) - Prep(28), Sub.&Review(28), Comment&Resub(14)& Approval(7)	273	01-Nov-24	31-Jul-25	-151	[Gantt bar: 01-Nov-24 to 31-Jul-25]																																																
DDA-670	Information and Document Management System (IDMS) - Prep(28), Sub.&Review(28), Comment&Resub(14)& Approval(7)	273	01-Nov-24	31-Jul-25	-151	[Gantt bar: 01-Nov-24 to 31-Jul-25]																																																
DDA-1280	Data Collection, Management, Analysis & Model System - Prep(28), Sub.&Review(28), Comment&Resub(14)& Approval(7)	273	01-Nov-24	31-Jul-25	-151	[Gantt bar: 01-Nov-24 to 31-Jul-25]																																																
<b>Package 12 - Chemical System for STB</b>																																																						
DDA-450	Chemical System for Sludge Thickening Building (STB) - Prep(60), Sub.&Review(45), Comment&Resub(14)& Approval(7)	150	06-Aug-24A	28-Feb-25	132	[Gantt bar: 06-Aug-24A to 28-Feb-25]																																																
<b>Package 13 - Pipework System</b>																																																						
DDA-460	Pipeworks System for Sludge Thickening Building (STB) - Prep(60), Sub.&Review(45), Comment&Resub(14)& Approval(7)	126	15-Oct-24A	06-Mar-25	37	[Gantt bar: 15-Oct-24A to 06-Mar-25]																																																
DDA-1030	Pipeworks System for Sludge Dewatering - Prep(60), Sub.&Review(45), Comment&Resub(14)& Approval(7)	126	01-Nov-24	06-Mar-25	37	[Gantt bar: 01-Nov-24 to 06-Mar-25]																																																
<b>Package 14 - Sludge Anaerobic Digestion System (SDT)</b>																																																						
DDA-1320	Electrical & Control for SDT & UCPP - Prepare (55), Sub. & Review (45), Comment & Resub (14) & Approval (7)	460	02-Jul-21A	29-Jan-25	182	[Gantt bar: 02-Jul-21A to 29-Jan-25]																																																
DDA-1330	Building Services for SDT & UCPP - Prepare (56), Sub. & Review (45), Comment & Resub (14) & Approval (7)	181	02-May-23A	29-Jan-25	-26	[Gantt bar: 02-May-23A to 29-Jan-25]																																																
<b>Package 15 - Biogas H2S Removal, Storage and Delivery System</b>																																																						
DDA-1390	Building Services for Biogas H2S Removal System - Prepare (28), Sub.& Review(28), Comment&Resub(14)& Approval(7)	137	31-May-23A	30-Jan-25	341	[Gantt bar: 31-May-23A to 30-Jan-25]																																																
DDA-1380	Electrical & Control for Biogas H2S Removal System - Prepare (28), Sub.& Review(28), Comment&Resub(14)& Approval(7)	105	25-Sep-23A	30-Jan-25	341	[Gantt bar: 25-Sep-23A to 30-Jan-25]																																																
<b>Package 16 - Deodorization Unit System</b>																																																						
DDA-1420	Mechanical for DOU No. 1 - Prepare (28), Sub.& Review(28), Comment&Resub(14)& Approval(7)	78	04-Mar-23A	19-Nov-24	-309	[Gantt bar: 04-Mar-23A to 19-Nov-24]																																																
DDA-1440	Mechanical for DOU No. 3 - Prepare (28), Sub.& Review(28), Comment&Resub(14)& Approval(7)	300	17-Jul-22A	02-Jan-25	60	[Gantt bar: 17-Jul-22A to 02-Jan-25]																																																
DDA-1420	Mechanical for DOU No. 2A and 2B - Prepare (28), Sub.& Review(28), Comment&Resub(14)& Approval(7)	122	13-Oct-23A	25-Feb-25	6	[Gantt bar: 13-Oct-23A to 25-Feb-25]																																																
<b>Package 17 - Sludge Dewatering Building (SDB)</b>																																																						
DDA-410	Roof Rainwater Collection System (RDB) - Prep(60), Sub.&Review(45), Comment&Resub(14)& Approval(7)	242	06-Mar-24A	30-Jun-25	80	[Gantt bar: 06-Mar-24A to 30-Jun-25]																																																
DDA-420	Fire Services System for SDB - Prep(60), Sub.&Review(45), Comment&Resub(14)& Approval(7)	242	19-Nov-24	18-Jul-25	34	[Gantt bar: 19-Nov-24 to 18-Jul-25]																																																
DDA-430	Mechanical for Sludge Dewatering Building (SDB) - Prep(60), Sub.&Review(45), Comment&Resub(14)& Approval(7)	242	19-Nov-24	18-Jul-25	62	[Gantt bar: 19-Nov-24 to 18-Jul-25]																																																
DDA-440	Plumbing System for Sludge Dewatering Bldg (SDB) - Prep(60), Sub.&Review(45), Comment&Resub(14)& Approval(7)	242	19-Nov-24	18-Jul-25	34	[Gantt bar: 19-Nov-24 to 18-Jul-25]																																																
DDA-450	BS for Sludge Dewatering Building (SDB) - Prep(118), Sub.&Review(45), Comment&Resub(14)& Approval(7)	242	19-Nov-24	18-Jul-25	34	[Gantt bar: 19-Nov-24 to 18-Jul-25]																																																
<b>Package 18 - Miscellaneous</b>																																																						
DDA-640	Civil & Structural for Misc. Manholes, Draw Pits, Fence Wall - Prep(60), Sub.& Review(45), Comment&Resub(14)& Approval(7)	235	28-Jan-25	19-Sep-25	254	[Gantt bar: 28-Jan-25 to 19-Sep-25]																																																
<b>Package 19 - Elevated Walkways</b>																																																						
DDA-710	Civil & Structural for Elevated Walkways - Prep(60), Sub.& Review(45), Comment&Resub(14)& Approval(7), GEO(28)	101	15-Apr-23A	20-Jan-25	430	[Gantt bar: 15-Apr-23A to 20-Jan-25]																																																
<b>Package 20 - Trestles</b>																																																						
DDA-720	Civil & Structural for Trestles - Prep(60), Sub.&Review(45), Comment&Resub(14)& Approval(7)	207	01-Nov-24	26-May-25	400	[Gantt bar: 01-Nov-24 to 26-May-25]																																																
<b>Package 21 - Steel Working Platform</b>																																																						
DDA-730	Civil & Structural for Steel Working Platform - Prep(60), Sub.&Review(45), Comment&Resub(14)& Approval(7)	102	02-Sep-22A	26-Apr-25	430	[Gantt bar: 02-Sep-22A to 26-Apr-25]																																																
<b>Package 22 - Sampling System of YLEPP</b>																																																						
DDA-740	Sampling System for W&PST - Prep(60), Sub.&Review(45), Comment&Resub(14)& Approval(7)	62	07-Jul-23A	02-Dec-24	-387	[Gantt bar: 07-Jul-23A to 02-Dec-24]																																																
DDA-1610	Sampling System for ACS&STB - Prep(60), Sub.&Review(45), Comment&Resub(14)& Approval(7)	127	07-Jul-23A	29-Apr-25	-217	[Gantt bar: 07-Jul-23A to 29-Apr-25]																																																
DDA-1620	Sampling System for SDT - Prep(60), Sub.&Review(45), Comment&Resub(14)& Approval(7)	127	07-Jul-23A	29-Apr-25	-116	[Gantt bar: 07-Jul-23A to 29-Apr-25]																																																
DDA-1630	Sampling System for STB - Prep(60), Sub.&Review(45), Comment&Resub(14)& Approval(7)	128	07-Jul-23A	29-Apr-25	-217	[Gantt bar: 07-Jul-23A to 29-Apr-25]																																																
<b>Package 23 - Security, Public Address and Communication System</b>																																																						
DDA-750	SPC Alarm ACS - Prep(60), Sub.&Review(45), Comment&Resub(14)& Approval(7)	98	21-Jun-23A	29-May-25	-247	[Gantt bar: 21-Jun-23A to 29-May-25]																																																
<b>Package 24 - Administration Building (ADB)</b>																																																						
DDA-0960	Architectural for Administration Building (ADB) - Prep(60), Sub.&Review(45), Comment&Resub(14)& Approval(7)	126	01-Nov-24	06-Mar-25	208	[Gantt bar: 01-Nov-24 to 06-Mar-25]																																																
DDA-0990	General Arrangement & Civil Req. Drawings for ADB - Prep(60), Sub.&Review(45), Comment&Resub(14)& Approval(7)	126	01-Nov-24	06-Mar-25	208	[Gantt bar: 01-Nov-24 to 06-Mar-25]																																																
DDA-1000	Mechanical for Administration Building (ADB) - Prep(60), Sub.&Review(45), Comment&Resub(14)& Approval(7)	126	01-Nov-24	06-Mar-25	208	[Gantt bar: 01-Nov-24 to 06-Mar-25]																																																
DDA-1010	Electrical & Control for Administration Building (ADB) - Prep(60), Sub.&Review(45), Comment&Resub(14)& Approval(7)	126	01-Nov-24	06-Mar-25	208	[Gantt bar: 01-Nov-24 to 06-Mar-25]																																																
DDA-1020	BS for Administration Building (ADB) - Prep(60), Sub.&Review(45), Comment&Resub(14)& Approval(7)	126	01-Nov-24	06-Mar-25	208	[Gantt bar: 01-Nov-24 to 06-Mar-25]																																																
<b>Design out of ATAL's Scope</b>																																																						
DDA-1540	Drainage systems at base slab / foundation level - Prep(60), Sub.&Review(45), Comment&Resub(14)& Approval(7)	126	24-Aug-22A	29-Dec-24	461	[Gantt bar: 24-Aug-22A to 29-Dec-24]																																																
DDA-1560	Steel fire hydrant system - Prep(60), Sub.&Review(45), Comment&Resub(14)& Approval(7)	126	22-Dec-23A	03-Feb-25	12	[Gantt bar: 22-Dec-23A to 03-Feb-25]																																																
DDA-1550	Rainwater drainage systems - Prep(60), Sub.&Review(45), Comment&Resub(14)& Approval(7)	126	30-Dec-24	04-May-25	461	[Gantt bar: 30-Dec-24 to 04-May-25]																																																
<b>Technical Submission</b>																																																						
<b>Operation and Maintenance (O&amp;M) Manuals and Installation Manuals (PS 34.20(11),12,13)</b>																																																						
<b>Inlet Works and Primary Sedimentation Tank</b>																																																						
SUBM-1070	Submit Review Approval Operation and Maintenance (O&M) Manuals and Installation Manuals - 1st draft	60	05-Jan-23A	24-Nov-24	-389	[Gantt bar: 05-Jan-23A to 24-Nov-24]																																																
SUBM-1200	Submit Review Approval Operation and Maintenance (O&M) Manuals and Installation Manuals - revised draft	60	25-Nov-24	23-Jan-25	-322	[Gantt bar: 25-Nov-24 to 23-Jan-25]																																																
<b>AGS and TTS system</b>																																																						
SUBM-1220	Submit Review Approval Operation and Maintenance (O&M) Manuals and Installation Manuals - 1st draft	60	25-Nov-24	23-Jan-25	-121	[Gantt bar: 25-Nov-24 to 23-Jan-25]																																																
SUBM-1230	Submit Review Approval Operation and Maintenance (O&M) Manuals and Installation Manuals - revised draft	60	24-Jan-25	24-Mar-25	342	[Gantt bar: 24-Jan-25 to 24-Mar-25]																																																
<b>Sludge Thickening System</b>																																																						
SUBM-1250	Submit Review Approval Operation and Maintenance (O&M) Manuals and Installation Manuals - 1st draft	60	25-Nov-24	23-Jan-25	312	[Gantt bar: 25-Nov-24 to 23-Jan-25]																																																
SUBM-1260	Submit Review Approval Operation and Maintenance (O&M) Manuals and Installation Manuals - revised draft	60	24-Jan-25	24-Mar-25	312	[Gantt bar: 24-Jan-25 to 24-Mar-25]																																																
<b>Sludge Digestion System</b>																																																						
SUBM-1310	Submit Review Approval Operation and Maintenance (O&M) Manuals and Installation Manuals - 1st draft	60	25-Nov-24	23-Jan-25	-351	[Gantt bar: 25-Nov-24 to 23-Jan-25]																																																



■ Remaining Level of Eff...  
■ Actual Work  
■ Remaining Work  
■ Critical Remaining Work  
◆ Milestone

## Contract DC/2019/10 - YLEPP - Main Works for Stage 1

### Monthly Progress Report No. 48- 3MRP (Oct 24)

Project ID : DWP43\_241118r1  
 Layout : DC201910 MPR48-3MRP  
 Page 2 of 9

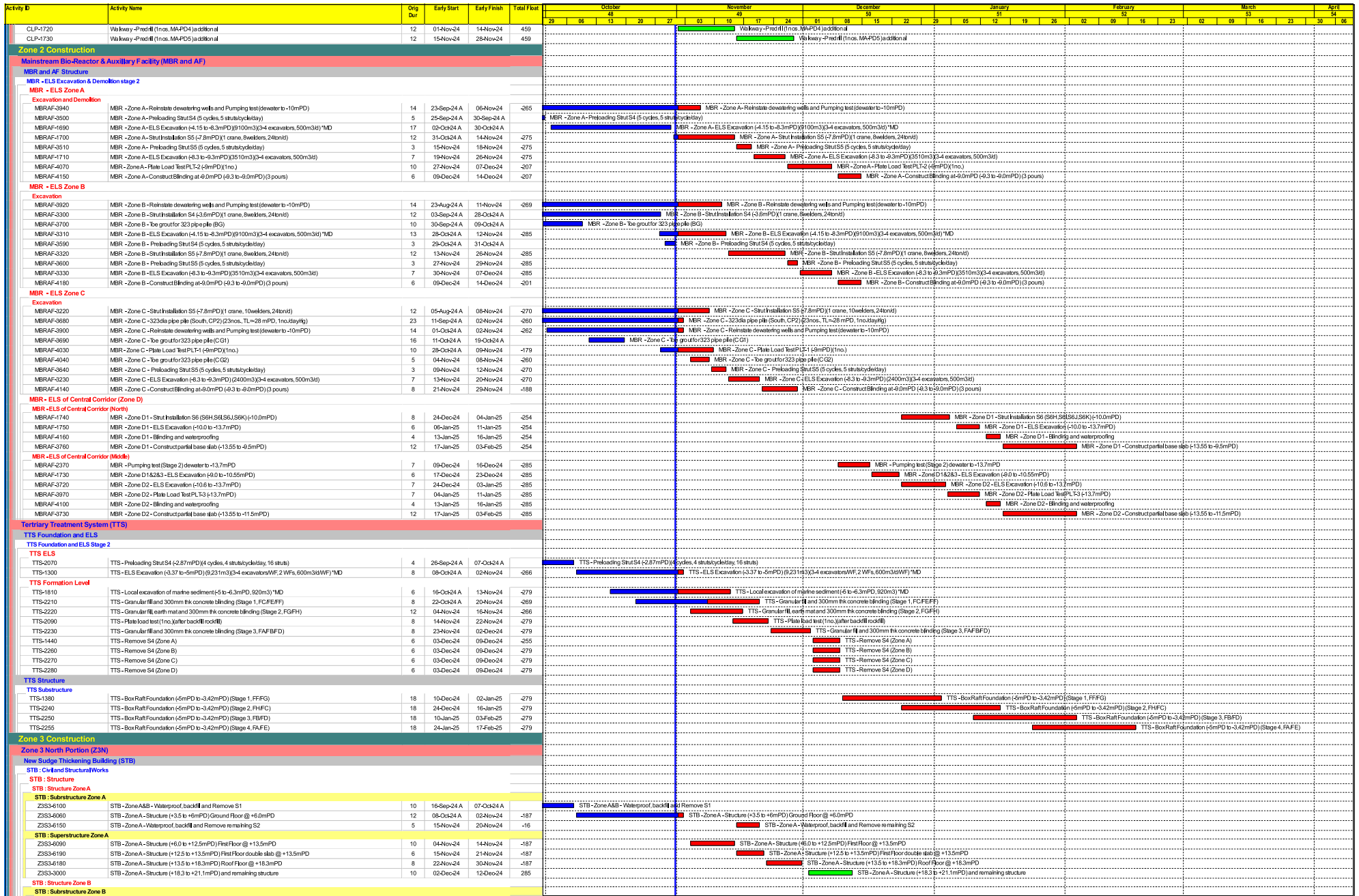
Monthly Progress Report - 3MRP			
Date	Revision	Checked	Approved
31-Oct-24	Rev. 0		











■ Remaining Level of Eff...  
■ Actual Work  
■ Remaining Work  
■ Critical Remaining Work  
◆ Milestone

## Contract DC/2019/10 - YLEPP - Main Works for Stage 1

### Monthly Progress Report No. 48- 3MRP (Oct 24)

Project ID: DWPr43\_241118r1  
 Layout : DC201910 MPR48-3MRP  
 Page 7 of 9

Monthly Progress Report - 3MRP			
Date	Revision	Checked	Approved
31-Oct-24	Rev. 0		

Activity ID	Activity Name	Orig Dur	Early Start	Early Finish	Total Float	October												November				December				January				February				March				April	
						29	06	13	20	27	03	10	17	24	01	08	15	22	29	05	12	19	26	02	09	16	23	02	09	16	23	30	06						
Z3S3-6290	STB - Zone B - Structure (+3.5 to +6mPD) Ground Floor @ +6.0mPD	12	04-Oct-24	22-Oct-24	-44	[Gantt bar: 04-Oct-24 to 22-Oct-24]												[Gantt bar: 04-Nov-24 to 22-Nov-24]				[Gantt bar: 04-Dec-24 to 22-Dec-24]				[Gantt bar: 04-Jan-25 to 22-Jan-25]				[Gantt bar: 04-Feb-25 to 22-Feb-25]				[Gantt bar: 04-Mar-25 to 22-Mar-25]		[Gantt bar: 04-Apr-25 to 22-Apr-25]			
Z3S3-6300	STB - Zone B - Waterpool backfill and Remove remaining S2	5	18-Dec-24	23-Dec-24	-44	[Gantt bar: 18-Dec-24 to 23-Dec-24]												[Gantt bar: 18-Jan-25 to 23-Jan-25]				[Gantt bar: 18-Feb-25 to 23-Feb-25]				[Gantt bar: 18-Mar-25 to 23-Mar-25]				[Gantt bar: 18-Apr-25 to 23-Apr-25]		[Gantt bar: 18-May-25 to 23-May-25]							
<b>STB - Superstructure Zone B</b>						[Gantt bar: 04-Oct-24 to 22-Oct-24]												[Gantt bar: 04-Nov-24 to 22-Nov-24]				[Gantt bar: 04-Dec-24 to 22-Dec-24]				[Gantt bar: 04-Jan-25 to 22-Jan-25]				[Gantt bar: 04-Feb-25 to 22-Feb-25]				[Gantt bar: 04-Mar-25 to 22-Mar-25]		[Gantt bar: 04-Apr-25 to 22-Apr-25]			
Z3S3-6250	STB - Zone B - Structure (+6.0 to +12.5mPD) First Floor @ +13.5mPD	20	13-Nov-24	05-Dec-24	-71	[Gantt bar: 13-Nov-24 to 05-Dec-24]												[Gantt bar: 13-Jan-25 to 05-Feb-25]				[Gantt bar: 13-Feb-25 to 05-Mar-25]				[Gantt bar: 13-Mar-25 to 05-Apr-25]				[Gantt bar: 13-Apr-25 to 05-May-25]		[Gantt bar: 13-May-25 to 05-Jun-25]							
Z3S3-6260	STB - Zone B - Structure (+12.5 to +13.5mPD) First Floor double slab @ +13.5mPD	10	06-Dec-24	17-Dec-24	-71	[Gantt bar: 06-Dec-24 to 17-Dec-24]												[Gantt bar: 06-Jan-25 to 17-Jan-25]				[Gantt bar: 06-Feb-25 to 17-Feb-25]				[Gantt bar: 06-Mar-25 to 17-Mar-25]				[Gantt bar: 06-Apr-25 to 17-Apr-25]		[Gantt bar: 06-May-25 to 17-May-25]							
<b>STB - Structure Zone C (KD10)</b>						[Gantt bar: 04-Oct-24 to 22-Oct-24]												[Gantt bar: 04-Nov-24 to 22-Nov-24]				[Gantt bar: 04-Dec-24 to 22-Dec-24]				[Gantt bar: 04-Jan-25 to 22-Jan-25]				[Gantt bar: 04-Feb-25 to 22-Feb-25]				[Gantt bar: 04-Mar-25 to 22-Mar-25]		[Gantt bar: 04-Apr-25 to 22-Apr-25]			
<b>STB - Substructure Zone C</b>						[Gantt bar: 04-Oct-24 to 22-Oct-24]												[Gantt bar: 04-Nov-24 to 22-Nov-24]				[Gantt bar: 04-Dec-24 to 22-Dec-24]				[Gantt bar: 04-Jan-25 to 22-Jan-25]				[Gantt bar: 04-Feb-25 to 22-Feb-25]				[Gantt bar: 04-Mar-25 to 22-Mar-25]		[Gantt bar: 04-Apr-25 to 22-Apr-25]			
Z3S3-2630	STB - Zone C - Structural Wall/Column (+3.5 to +6mPD) & Ground Floor Slab @ +6.0mPD	10	16-Sep-24	08-Oct-24	A	[Gantt bar: 16-Sep-24 to 08-Oct-24]												[Gantt bar: 16-Nov-24 to 08-Dec-24]				[Gantt bar: 16-Jan-25 to 08-Feb-25]				[Gantt bar: 16-Feb-25 to 08-Mar-25]				[Gantt bar: 16-Mar-25 to 08-Apr-25]		[Gantt bar: 16-Apr-25 to 08-May-25]							
<b>STB - Superstructure Zone C</b>						[Gantt bar: 04-Oct-24 to 22-Oct-24]												[Gantt bar: 04-Nov-24 to 22-Nov-24]				[Gantt bar: 04-Dec-24 to 22-Dec-24]				[Gantt bar: 04-Jan-25 to 22-Jan-25]				[Gantt bar: 04-Feb-25 to 22-Feb-25]				[Gantt bar: 04-Mar-25 to 22-Mar-25]		[Gantt bar: 04-Apr-25 to 22-Apr-25]			
Z3S3-2710	STB - Zone C - Structure (+6.0 to +12.5/13.5mPD) First Floor @ +13.5mPD	10	09-Oct-24	26-Oct-24	A	[Gantt bar: 09-Oct-24 to 26-Oct-24]												[Gantt bar: 09-Nov-24 to 26-Nov-24]				[Gantt bar: 09-Dec-24 to 26-Dec-24]				[Gantt bar: 09-Jan-25 to 26-Jan-25]				[Gantt bar: 09-Feb-25 to 26-Feb-25]				[Gantt bar: 09-Mar-25 to 26-Mar-25]		[Gantt bar: 09-Apr-25 to 26-Apr-25]			
Z3S3-2740	STB - Zone C - Structure (+12.5/13.5 to +18.3mPD) Roof Floor @ +18.3mPD	10	28-Oct-24	12-Nov-24	-181	[Gantt bar: 28-Oct-24 to 12-Nov-24]												[Gantt bar: 28-Nov-24 to 12-Dec-24]				[Gantt bar: 28-Jan-25 to 12-Feb-25]				[Gantt bar: 28-Feb-25 to 12-Mar-25]				[Gantt bar: 28-Mar-25 to 12-Apr-25]		[Gantt bar: 28-Apr-25 to 12-May-25]							
Z3S3-2720	STB - Zone C - Construct concrete plinth for PV panel installation (4nos, 1nos/day/ang, 1gang)	12	20-Nov-24	03-Dec-24	-181	[Gantt bar: 20-Nov-24 to 03-Dec-24]												[Gantt bar: 20-Dec-24 to 03-Jan-25]				[Gantt bar: 20-Jan-25 to 03-Feb-25]				[Gantt bar: 20-Feb-25 to 03-Mar-25]				[Gantt bar: 20-Mar-25 to 03-Apr-25]		[Gantt bar: 20-Apr-25 to 03-May-25]							
Z3S3-2780	STB - Zone C - CM&I Structural Works of Roof Floor & handover to PV's contractor	8	20-Nov-24	03-Dec-24	-187	[Gantt bar: 20-Nov-24 to 03-Dec-24]												[Gantt bar: 20-Dec-24 to 03-Jan-25]				[Gantt bar: 20-Jan-25 to 03-Feb-25]				[Gantt bar: 20-Feb-25 to 03-Mar-25]				[Gantt bar: 20-Mar-25 to 03-Apr-25]		[Gantt bar: 20-Apr-25 to 03-May-25]							
<b>STB - Water Tightness Test</b>						[Gantt bar: 04-Oct-24 to 22-Oct-24]												[Gantt bar: 04-Nov-24 to 22-Nov-24]				[Gantt bar: 04-Dec-24 to 22-Dec-24]				[Gantt bar: 04-Jan-25 to 22-Jan-25]				[Gantt bar: 04-Feb-25 to 22-Feb-25]				[Gantt bar: 04-Mar-25 to 22-Mar-25]		[Gantt bar: 04-Apr-25 to 22-Apr-25]			
<b>STB - Water Tightness Test Zone A</b>						[Gantt bar: 04-Oct-24 to 22-Oct-24]												[Gantt bar: 04-Nov-24 to 22-Nov-24]				[Gantt bar: 04-Dec-24 to 22-Dec-24]				[Gantt bar: 04-Jan-25 to 22-Jan-25]				[Gantt bar: 04-Feb-25 to 22-Feb-25]				[Gantt bar: 04-Mar-25 to 22-Mar-25]		[Gantt bar: 04-Apr-25 to 22-Apr-25]			
Z3S3-6310	STB - Zone A - Concrete gain strength (slab +6mPD)	7	04-Nov-24	11-Nov-24	-60	[Gantt bar: 04-Nov-24 to 11-Nov-24]												[Gantt bar: 04-Dec-24 to 11-Dec-24]				[Gantt bar: 04-Jan-25 to 11-Jan-25]				[Gantt bar: 04-Feb-25 to 11-Mar-25]				[Gantt bar: 04-Mar-25 to 11-Apr-25]		[Gantt bar: 04-Apr-25 to 11-May-25]							
Z3S3-6320	STB - Zone A - Remove formwork and concrete defect works for water test	7	12-Nov-24	19-Nov-24	-60	[Gantt bar: 12-Nov-24 to 19-Nov-24]												[Gantt bar: 12-Dec-24 to 19-Dec-24]				[Gantt bar: 12-Jan-25 to 19-Jan-25]				[Gantt bar: 12-Feb-25 to 19-Mar-25]				[Gantt bar: 12-Mar-25 to 19-Apr-25]		[Gantt bar: 12-Apr-25 to 19-May-25]							
Z3S3-6330	STB - Zone A - Water Tight Test (water height=6.15m,plug=1d,fill=4d,absorption=7d,seal=7d,remove=1d)	20	20-Nov-24	12-Dec-24	-60	[Gantt bar: 20-Nov-24 to 12-Dec-24]												[Gantt bar: 20-Dec-24 to 12-Jan-25]				[Gantt bar: 20-Jan-25 to 12-Feb-25]				[Gantt bar: 20-Feb-25 to 12-Mar-25]				[Gantt bar: 20-Mar-25 to 12-Apr-25]		[Gantt bar: 20-Apr-25 to 12-May-25]							
<b>STB - Water Tightness Test Zone B</b>						[Gantt bar: 04-Oct-24 to 22-Oct-24]												[Gantt bar: 04-Nov-24 to 22-Nov-24]				[Gantt bar: 04-Dec-24 to 22-Dec-24]				[Gantt bar: 04-Jan-25 to 22-Jan-25]				[Gantt bar: 04-Feb-25 to 22-Feb-25]				[Gantt bar: 04-Mar-25 to 22-Mar-25]		[Gantt bar: 04-Apr-25 to 22-Apr-25]			
Z3S3-6340	STB - Zone B - Concrete gain strength (slab +6mPD)	7	01-Nov-24	08-Nov-24	-58	[Gantt bar: 01-Nov-24 to 08-Nov-24]												[Gantt bar: 01-Dec-24 to 08-Dec-24]				[Gantt bar: 01-Jan-25 to 08-Jan-25]				[Gantt bar: 01-Feb-25 to 08-Mar-25]				[Gantt bar: 01-Mar-25 to 08-Apr-25]		[Gantt bar: 01-Apr-25 to 08-May-25]							
Z3S3-6350	STB - Zone B - Remove formwork and concrete defect works for water test	7	09-Nov-24	16-Nov-24	-58	[Gantt bar: 09-Nov-24 to 16-Nov-24]												[Gantt bar: 09-Dec-24 to 16-Dec-24]				[Gantt bar: 09-Jan-25 to 16-Jan-25]				[Gantt bar: 09-Feb-25 to 16-Mar-25]				[Gantt bar: 09-Mar-25 to 16-Apr-25]		[Gantt bar: 09-Apr-25 to 16-May-25]							
Z3S3-6360	STB - Zone B - Water Tight Test (water height=6.15m,plug=1d,fill=4d,absorption=7d,seal=7d,remove=1d)	20	18-Nov-24	10-Dec-24	-58	[Gantt bar: 18-Nov-24 to 10-Dec-24]												[Gantt bar: 18-Dec-24 to 10-Jan-25]				[Gantt bar: 18-Jan-25 to 10-Feb-25]				[Gantt bar: 18-Feb-25 to 10-Mar-25]				[Gantt bar: 18-Mar-25 to 10-Apr-25]		[Gantt bar: 18-Apr-25 to 10-May-25]							
<b>STB - Water Tightness Test Zone C</b>						[Gantt bar: 04-Oct-24 to 22-Oct-24]												[Gantt bar: 04-Nov-24 to 22-Nov-24]				[Gantt bar: 04-Dec-24 to 22-Dec-24]				[Gantt bar: 04-Jan-25 to 22-Jan-25]				[Gantt bar: 04-Feb-25 to 22-Feb-25]				[Gantt bar: 04-Mar-25 to 22-Mar-25]		[Gantt bar: 04-Apr-25 to 22-Apr-25]			
Z3S3-6390	STB - Zone C - Concrete gain strength (slab +6mPD)	7	01-Nov-24	08-Nov-24	-58	[Gantt bar: 01-Nov-24 to 08-Nov-24]												[Gantt bar: 01-Dec-24 to 08-Dec-24]				[Gantt bar: 01-Jan-25 to 08-Jan-25]				[Gantt bar: 01-Feb-25 to 08-Mar-25]				[Gantt bar: 01-Mar-25 to 08-Apr-25]		[Gantt bar: 01-Apr-25 to 08-May-25]							
Z3S3-6400	STB - Zone C - Remove formwork and concrete defect works for water test	7	08-Nov-24	15-Nov-24	-58	[Gantt bar: 08-Nov-24 to 15-Nov-24]												[Gantt bar: 08-Dec-24 to 15-Dec-24]				[Gantt bar: 08-Jan-25 to 15-Jan-25]				[Gantt bar: 08-Feb-25 to 15-Mar-25]				[Gantt bar: 08-Mar-25 to 15-Apr-25]		[Gantt bar: 08-Apr-25 to 15-May-25]							
Z3S3-6200	STB - Zone C - Water Tight Test (water height=6.15m,plug=1d,fill=4d,absorption=7d,seal=7d,remove=1d)	20	18-Nov-24	10-Dec-24	-58	[Gantt bar: 18-Nov-24 to 10-Dec-24]												[Gantt bar: 18-Dec-24 to 10-Jan-25]				[Gantt bar: 18-Jan-25 to 10-Feb-25]				[Gantt bar: 18-Feb-25 to 10-Mar-25]				[Gantt bar: 18-Mar-25 to 10-Apr-25]		[Gantt bar: 18-Apr-25 to 10-May-25]							
<b>STB - ABWF</b>						[Gantt bar: 04-Oct-24 to 22-Oct-24]												[Gantt bar: 04-Nov-24 to 22-Nov-24]				[Gantt bar: 04-Dec-24 to 22-Dec-24]				[Gantt bar: 04-Jan-25 to 22-Jan-25]				[Gantt bar: 04-Feb-25 to 22-Feb-25]				[Gantt bar: 04-Mar-25 to 22-Mar-25]		[Gantt bar: 04-Apr-25 to 22-Apr-25]			
<b>STB - ABWF (-1.5 to +6.0mPD)</b>						[Gantt bar: 04-Oct-24 to 22-Oct-24]												[Gantt bar: 04-Nov-24 to 22-Nov-24]				[Gantt bar: 04-Dec-24 to 22-Dec-24]				[Gantt bar: 04-Jan-25 to 22-Jan-25]				[Gantt bar: 04-Feb-25 to 22-Feb-25]				[Gantt bar: 04-Mar-25 to 22-Mar-25]		[Gantt bar: 04-Apr-25 to 22-Apr-25]			
Z3S3-5980	STB - Remove backdrop and falsework for ABWF works (-1.5 to +6mPD)	7	13-Dec-24	20-Dec-24	-60	[Gantt bar: 13-Dec-24 to 20-Dec-24]												[Gantt bar: 13-Jan-25 to 20-Jan-25]				[Gantt bar: 13-Feb-25 to 20-Mar-25]				[Gantt bar: 13-Mar-25 to 20-Apr-25]				[Gantt bar: 13-Apr-25 to 20-May-25]		[Gantt bar: 13-May-25 to 20-Jun-25]							
Z3S3-2790	STB - ABWF Works (1st floor E&M handover) @ below ground floor (+1.5 to +6mPD)	18	21-Dec-24	14-Jan-25	-60	[Gantt bar: 21-Dec-24 to 14-Jan-25]												[Gantt bar: 21-Jan-25 to 14-Feb-25]				[Gantt bar: 21-Feb-25 to 14-Mar-25]				[Gantt bar: 21-Mar-25 to 14-Apr-25]				[Gantt bar: 21-Apr-25 to 14-May-25]		[Gantt bar: 21-May-25 to 14-Jun-25]							
Z3S3-6210	STB - ABWF Works (lining for E&M handover) (scaffold=1d, surface prep=1d, install=4d, testing=1d)	7	21-Dec-24	31-Dec-24	-49	[Gantt bar: 21-Dec-24 to 31-Dec-24]												[Gantt bar: 21-Jan-25 to 30-Jan-25]				[Gantt bar: 21-Feb-25 to 31-Mar-25]				[Gantt bar: 21-Mar-25 to 29-Apr-25]				[Gantt bar: 21-Apr-25 to 29-May-25]		[Gantt bar: 21-May-25 to 29-Jun-25]							
<b>STB - ABWF (+6.0 to +18.3mPD)</b>						[Gantt bar: 04-Oct-24 to 22-Oct-24]												[Gantt bar: 04-Nov-24 to 22-Nov-24]				[Gantt bar: 04-Dec-24 to 22-Dec-24]				[Gantt bar: 04-Jan-25 to 22-Jan-25]				[Gantt bar: 04-Feb-25 to 22-Feb-25]				[Gantt bar: 04-Mar-25 to 22-Mar-25]		[Gantt bar: 04-Apr-25 to 22-Apr-25]			
Z3S3-6020	STB - Concrete gain strength (slab +13.5 to +18.3mPD)	7	18-Dec-24	27-Dec-24	-71	[Gantt bar: 18-Dec-24 to 27-Dec-24]												[Gantt bar: 18-Jan-25 to 27-Jan-25]				[Gantt bar: 18-Feb-25 to 27-Mar-25]				[Gantt bar: 18-Mar-25 to 26-Apr-25]				[Gantt bar: 18-Apr-25 to 26-May-25]		[Gantt bar: 18-May-25 to 26-Jun-25]							
Z3S3-6010	STB - Remove backdrop and falsework for ABWF works (+6.0 to +18.3mPD)	7	28-Dec-24	04-Jan-25	-71	[Gantt bar: 28-Dec-24 to 04-Jan-25]												[Gantt bar: 28-Jan-25 to 04-Feb-25]				[Gantt bar: 28-Feb-25 to 06-Mar-25]				[Gantt bar: 28-Mar-25 to 05-Apr-25]				[Gantt bar: 28-Apr-25 to 05-May-25]		[Gantt bar: 28-May-25 to 05-Jun-25]							
Z3S3-4540	STB - ABWF Works (1st floor E&M handover) @ above ground floor (+6.0 to +18.3mPD)	18	07-Jan-25	27-Jan-25	-71	[Gantt bar: 07-Jan-25 to 27-Jan-25]												[Gantt bar: 07-Feb-25 to 27-Feb-25]				[Gantt bar: 07-Mar-25 to 27-Mar-25]				[Gantt bar: 07-Apr-25 to 27-Apr-25]				[Gantt bar: 07-May-25 to 27-May-25]		[Gantt bar: 07-Jun-25 to 27-Jun-25]							
<b>STB - ABWF (above +18.3mPD roof)</b>						[Gantt bar: 04-Oct-24 to 22-Oct-24]												[Gantt bar: 04-Nov-24 to 22-Nov-24]				[Gantt bar: 04-Dec-24 to 22-Dec-24]				[Gantt bar: 04-Jan-25 to 22-Jan-25]				[Gantt bar: 04-Feb-25 to 22-Feb-25]				[Gantt bar: 04-Mar-25 to 22-Mar-25]		[Gantt bar: 04-Apr-25 to 22-Apr-25]			
Z3S3-4560	STB - ABWF Works @ roof (+18.0 to +21.1mPD)	90	13-Dec-24	03-Apr-25	285	[Gantt bar: 13-Dec-24 to 03-Apr-25]												[Gantt bar: 13-Jan-25 to 03-May-25]				[Gantt bar: 13-Feb-25 to 03-Jun-25]				[Gantt bar: 13-Mar-25 to 03-Jul-25]				[Gantt bar: 13-Apr-25 to 03-Aug-25]		[Gantt bar: 13-May-25 to 03-Sep-25]							
<b>STB - E&amp;M Installation</b>						[Gantt bar: 04-Oct-24 to 22-Oct-24]												[Gantt bar: 04-Nov-24 to 22-Nov-24]				[Gantt bar: 04-Dec-24 to 22-Dec-24]				[Gantt bar: 04-Jan-25 to 22-Jan-25]				[Gantt bar: 04-Feb-25 to 22-Feb-25]				[Gantt bar: 04-Mar-25 to 22-Mar-25]		[Gantt bar: 04-Apr-25 to 22-Apr-25]			
Z3S3-2799	STB - E&M Handover	0	28-Jan-25		-71	[Gantt bar: 28-Jan-25 to 28-Jan-25]												[Gantt bar: 28-Feb-25 to 28-Feb-25]				[Gantt bar: 28-Mar-25 to 28-Mar-25]				[Gantt bar: 28-Apr-25 to 28-Apr-25]				[Gantt bar: 28-May-25 to 28-May-25]		[Gantt bar: 28-Jun-25 to 28-Jun-25]							
<b>STB E&amp;M : Pump Room Floor @ -1.5mPD</b>						[Gantt bar: 04-Oct-24 to 22-Oct-24]												[Gantt bar: 04-Nov-24 to 22-Nov-24]				[Gantt bar: 04-Dec-24 to 22-Dec-24]				[Gantt bar: 04-Jan-25 to 22-Jan-25]				[Gantt bar: 04-Feb-25 to 22-Feb-25]				[Gantt bar: 04-Mar-25 to 22-Mar-25]		[Gantt bar: 04-Apr-25 to 22-Apr-25]			
<b>Lifting Appliance x 6 sets</b>						[Gantt bar: 04-Oct-24 to 22-Oct-24]												[Gantt bar: 04-Nov-24 to 22-Nov-24]				[Gantt bar: 04-Dec-24 to 22-Dec-24]				[Gantt bar: 04-Jan-25 to 22-Jan-25]				[Gantt bar: 04-Feb-25 to 22-Feb-25]				[Gantt bar: 04-Mar-25 to 22-Mar-25]		[Gantt bar: 04-Apr-25 to 22-Apr-25]			
Z3S3-4010	STB - LALG(LA-05-01) - Monorail @ -1.5mPD - Thickening Centrifuge Feed Pump	39	28-Jan-25	17-Mar-25	52	[Gantt bar: 28-Jan-25 to 17-Mar-25]												[Gantt bar: 28-Feb-25 to 17-Apr-25]				[Gantt bar: 28-Mar-25 to 17-May-25]				[Gantt bar: 28-Apr-25 to 17-Jun-25]				[Gantt bar: 28-May-25 to 17-Jul-25]		[Gantt bar: 28-Jun-25 to 17-Aug-25]							
Z3S3-4020	STB - LALG(LA-05-02) - Monorail @ -1.5mPD - Digester Feed Pump	39	28-Jan-25	17-Mar-25	52	[Gantt bar: 28-Jan-25 to 17-Mar-25]												[Gantt bar: 28-Feb-25 to 17-Apr-25]				[Gantt bar: 28-Mar-25 to 17-May-25]				[Gantt bar: 28-Apr-25 to 17-Jun-25]				[Gantt bar: 28-May-25 to 17-Jul-25]		[Gantt bar: 28-Jun-25 to 17-Aug-25]							
Z3S3-4030	STB - LALG(LA-05-03) - Monorail @ -1.5mPD - Jet/Mixer for Thickening Sludge Holding Tank No.1	39	28-Jan-25	17-Mar-25	-27	[Gantt bar: 28-Jan-25 to 17-Mar-25]												[Gantt bar: 28-Feb-25 to 17-Apr-25]				[Gantt bar: 28-Mar-25 to 17-May-25]				[Gantt bar: 28-Apr-25 to 17-Jun-25]				[Gantt bar: 28-May-25 to 17-Jul-25]		[Gantt bar: 28-Jun-25 to 17-Aug-25]							
Z3S3-4040	STB - LALG(LA-05-04) - Monorail @ -1.5mPD - Digester Feed Pump	39	28-Jan-25	17-Mar-25	52	[Gantt bar: 28-Jan-25 to 17-Mar-25]												[Gantt bar: 28-Feb-25 to 17-Apr-25]				[Gantt bar: 28-Mar-25 to 17-May-25]				[Gantt bar: 28-Apr-25 to 17-Jun-25]				[Gantt bar: 28-May-25 to 17-Jul-25]		[Gantt bar: 28-Jun-25 to 17-Aug-25]							
Z3S3-4050	STB - LALG(LA-05-05) - Monorail @ +6.0mPD - For Pump Room Floor	39	28-Jan-25	17-Mar-25	-68	[Gantt bar: 28-Jan-25 to 17-Mar-25]												[Gantt bar: 28-Feb-25 to 17-Apr-25]				[Gantt bar: 28-Mar-25 to 17-May-25]				[Gantt bar: 28-Apr-25 to 17-Jun-25]				[Gantt bar: 28-May-25 to 17-Jul-25]		[Gantt bar: 28-Jun-25 to 17-Aug-25]							
<b>STB E&amp;M : Thickening Centrifuge Hall and Polymer Area @ +6.0mPD</b>						[Gantt bar: 04-Oct-24 to 22-Oct-24]												[Gantt bar: 04-Nov																					

